

# Cann Hall Primary School

Constable Avenue, Clacton, Essex CO16 8DA

Tel: 01255 420603

Email: [chcontact@compassps.uk](mailto:chcontact@compassps.uk)

Website: [www.cannhall.compassps.uk](http://www.cannhall.compassps.uk)

**Head Teacher:**

Sarah Crookes

**Deputy Head Teacher:**

Wendy Byrne



Friday 30th September 2022

Dear Parents and Carers,

I hope you have been managing to keep warm as the temperatures have dropped this week. It definitely feels like time to dig out the winter coats! With that in mind, please make sure that children bring a coat to school and have a jumper or cardigan to keep them warm on chilly days.

## **Beat the Street**

A huge thank you and well done to everyone who supported us, by taking part in our 'Beat the Street' campaign. With your help, we secured 2nd place in both the 'Total Points' and 'Average Points' categories, winning £400 worth of Waterstone's vouchers. This means even more new books for the school!



## **Sports Camps**

Cannons Basketball are delighted to be able to offer All Sports and Basketball Camps again this October, during the half term holidays; it is their mission to use sport and physical activity as a way of bringing communities together.

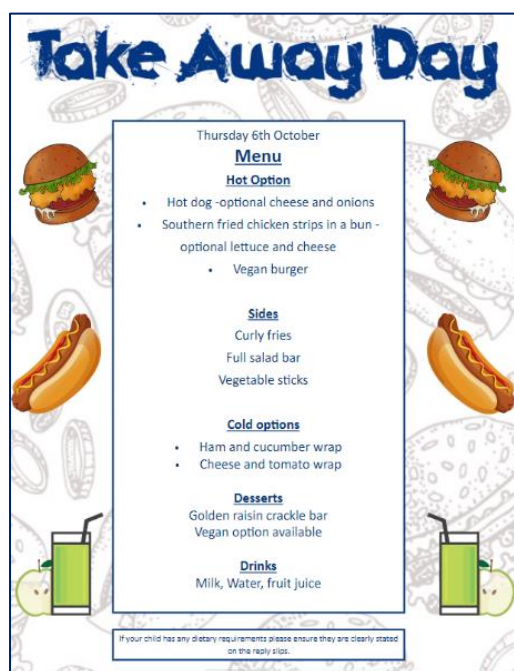
Please see their website <https://www.cannonsbasketball.co.uk> if your child is interested or for more information about the camps please use the following link <https://cannons.class4kids.co.uk/camps>

## **Say Hello to Baby Lilah**

Mrs Argent-Hudson sent us a lovely update this week on how the new addition to their family is doing. She told us that Lilah is growing far too quickly for her liking, but they are getting lots of smiles now – as you can see from this gorgeous photograph



## Census Day Menu Booking Form



Funding for schools remains an ongoing challenge nationally. Like many other institutions across the country, we continue to face the impact of rising costs and real term funding reductions.

The vast majority of school funding is driven by the school census. The school census takes place at key points throughout the academic year. Whilst it would be easy to simply calculate our pupil led funding based on pupil numbers, calculations are not that straight forward. Part of our funding is based on school meal uptake, particularly in Reception and Key Stage One where universal free school meal funding is based on the number of children who actually take a school lunch on the census day.

**To support us with this ongoing challenge, it would help the school greatly, if all children, especially those in Reception, year 1 and year 2 book a school lunch on Thursday October 6th, census day.**

In order to encourage children to have a school dinner, on census day, we will be promoting a special menu - Take Away Day. We have created a short booking form [click here](#) so you can pre-book your child's meal for this day. This is so that we can ensure that everything runs smoothly as possible. Please include any dietary requirements on this form. The deadline for booking a census day lunch is Tuesday 4<sup>th</sup> October

Even though school meals are free for all children in Reception, Year 1 and Year 2, for census day, you will need to pre-book but there will still be no charge for those year groups.

For children in years 3, 4, 5 and 6 meals can be paid for via the MCAS app, **select: clubs, available, Census Day Dinner**. Please note meals need to be paid for in advance of 6th October 2022.

## Gates Closing

Another reminder that our gates do close in the morning at **8.40am**. If you arrive after this time you will need to sign your child in at the main office. Our teachers are always at the classroom doors to welcome your children into school in the morning and are happy to help with any queries. If, however, you do have a concern that cannot be resolved with a brief conversation, please contact your child's class teacher, using their school email address, which can be found at the bottom of this letter. This way the school site can be secured, and teachers can be in class to start the day's learning at 8.40am. Thank you for your support with this.

## Support for Parents

**Extra** provide some great courses, which aim to help parents and carers support their children and understand their behaviours. Please take a look at the notices below, if you are interested and would like to book a place



**Step by Step - Early Years**

Step by Step Early Years is a 9 week course for parents/carers of children aged from 2 - 5 years. This course supports the establishment of loving positive relationships between parents and their children. The programme aims to: promote positive home/pre-school setting links, develop effective listening and communication skills, teach parents the importance of play, praise and self esteem, show parents how to recognise stress in themselves and their children, give parents strategies for managing difficult situations, give parents an understanding of their child's behaviour and promote effective positive behaviour management strategies.

For more info or to book a place contact EXTRA on **01255 475001** or Email: [admin@extrasupportforfamilies.co.uk](mailto:admin@extrasupportforfamilies.co.uk) or [www.extrasupportforfamilies.co.uk](http://www.extrasupportforfamilies.co.uk)

**extra** SUPPORT FOR FAMILIES  
A Charitable Incorporated Organisation  
Registered in England No: 1158891  
Currently funded by:   



**Step by Step - Primary**

Step by Step Primary is open to all parents of children aged 4-11 years. This 9 week programme aims to help parents develop positive relationships with their child; increase confidence in handling children's behaviour and help parents to make good links with their child's school. The topics covered are: being a parent; developing relationships through play; listening and talking; feelings; praise and rewards; routines, rules and limit setting; managing behaviour and problem solving.

**Friday 7th October.  
9.30am - 11.30am**  
**Hamford Primary Academy, Walton on the Naze.**

**Held in partnership with  
North East SEND Services, Essex County Council**

For more info or to book a place contact EXTRA on **01255 475001** or Email: [admin@extrasupportforfamilies.co.uk](mailto:admin@extrasupportforfamilies.co.uk) or [www.extrasupportforfamilies.co.uk](http://www.extrasupportforfamilies.co.uk)

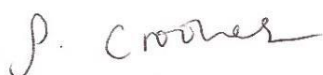
**extra** SUPPORT FOR FAMILIES  
A Charitable Incorporated Organisation  
Registered in England No: 1158891  
Currently funded by:   

## Upcoming dates for your diary (please check our [website](http://www.extrasupportforfamilies.co.uk))

3.10.2022: Harvest Assembly  
6.10.2022: Census Takeaway Menu  
14.10.2022: Individual school photos  
19.10.2022: Harvest Festival  
24.10.2022 to 28.10.2022: Half Term  
2.11.2022: Flu vaccinations  
16.11.2022 & 17.11.2022: Learning Conferences  
21.12.2022 to 4.1.2023: Christmas Holidays

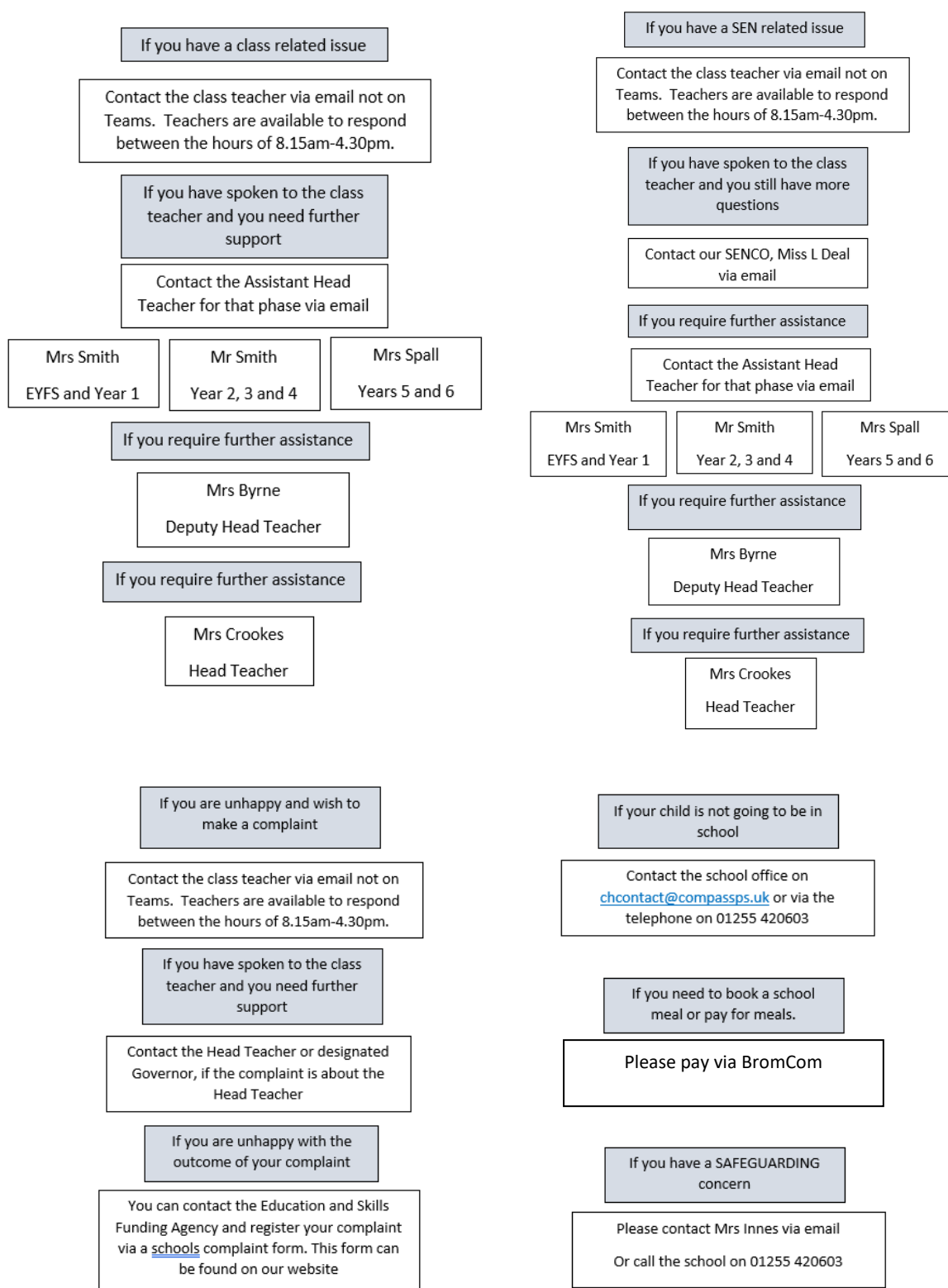
Wishing you all a lovely weekend.

Kindest regards,



Sarah Crookes

## Communication Plan



## **School Contact Email Addresses**

Please note that staff will be available to respond to your emails between 8.15am and 4.30pm Monday – Friday. Emails received outside of these times, may not be responded to until the next working day.

<b>Name</b>	<b>Job Title</b>	<b>Email Address</b>
Adam Giles	Teacher	<a href="mailto:agiles@compassps.uk">agiles@compassps.uk</a>
Adrienne Byrne	Teacher	<a href="mailto:abyrne@compassps.uk">abyrne@compassps.uk</a>
Aleighsha Manning	Teacher	<a href="mailto:amanning@compassps.uk">amanning@compassps.uk</a>
Amanda Ross	Teacher	<a href="mailto:aross@compassps.uk">aross@compassps.uk</a>
Becky Aslin	Teacher	<a href="mailto:baslin@compassps.uk">baslin@compassps.uk</a>
Carla Mason	Teacher	<a href="mailto:cmason@compassps.uk">cmason@compassps.uk</a>
Caroline Smith	Assistant Headteacher	<a href="mailto:csmith@compassps.uk">csmith@compassps.uk</a>
Charles Abrehart-Briggs	Teacher	<a href="mailto:cabrehart-briggs@compassps.uk">cabrehart-briggs@compassps.uk</a>
Claire Hollamby-Harding	Teacher	<a href="mailto:chollamby-harding@compassps.uk">chollamby-harding@compassps.uk</a>
Claire Spall	Assistant Headteacher	<a href="mailto:cspall@compassps.uk">cspall@compassps.uk</a>
Emma Levy	Teacher	<a href="mailto:elevy@compassps.uk">elevy@compassps.uk</a>
Laura Deal	SENCO	<a href="mailto:ldeal@compassps.uk">ldeal@compassps.uk</a>
Laura Wooler	Teacher	<a href="mailto:lwooler@compassps.uk">lwooler@compassps.uk</a>
Lianne Deal	Teacher	<a href="mailto:ldeal1@compassps.uk">ldeal1@compassps.uk</a>
Lisa Burgess	Teacher	<a href="mailto:lburgess@compassps.uk">lburgess@compassps.uk</a>
Matthew Smith	Assistant Headteacher	<a href="mailto:msmith@compassps.uk">msmith@compassps.uk</a>
Nick Roberts	Teacher	<a href="mailto:nroberts@compassps.uk">nroberts@compassps.uk</a>
Peter Turner	Teacher	<a href="mailto:pturner1@compassps.uk">pturner1@compassps.uk</a>
School Office	Admin Staff	<a href="mailto:chcontact@compassps.uk">chcontact@compassps.uk</a>
Sarah Crookes	Headteacher	<a href="mailto:scrookes@compassps.uk">scrookes@compassps.uk</a>
Sarah McWilliams	Learning Mentor	<a href="mailto:smcwilliams@compassps.uk">smcwilliams@compassps.uk</a>
Susan Innes	Safeguarding Lead and Pastoral Manager	<a href="mailto:sinnes@compassps.uk">sinnes@compassps.uk</a>
Wendy Byrne	Deputy Headteacher	<a href="mailto:wbyrne@compassps.uk">wbyrne@compassps.uk</a>