

# Cann Hall Primary School

Constable Avenue, Clacton, Essex CO16 8DA  
Tel: 01255 420603  
Email: [chcontact@compassps.uk](mailto:chcontact@compassps.uk)  
Website: [www.cannhall.compassps.uk](http://www.cannhall.compassps.uk)

**Executive Headteacher:** Ross Silcock  
**Headteacher:** Wendy Byrne

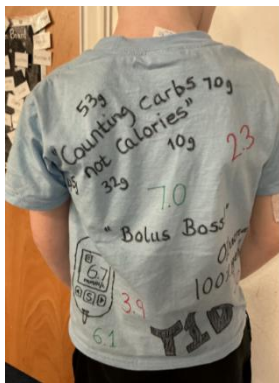
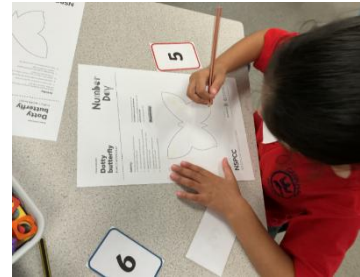


Friday 6th February 2026

Dear Parents and Carers

## NSPCC number day

Thank for supporting NSPCC Number Day! It was wonderful to see the children dressed up in their number-themed outfits and their enthusiasm made the day extra special. We are extremely grateful for the generous donations received, all of which will help the NSPCC continue its vital work supporting children and keeping them safe. So far, with your help, we have raised £189.12.



## Sickle Cell Awareness Day

To help raise awareness of Sickle Cell Disorder, we are inviting the children to wear **something purple**, on Friday 13<sup>th</sup> February, the official colour associated with sickle cell advocacy.

### What is Sickle Cell Disease?

Sickle cell disease is a **genetic blood condition** that affects the haemoglobin in red blood cells. Instead of being round and flexible, some red blood cells become **hard, sticky, and sickle-shaped** (like a crescent). This can lead to:

- **Painful episodes** known as “crises”
- **Infections**, as the body’s ability to fight illness is reduced
- **Anaemia**, because sickle-shaped cells break down more quickly
- **Fatigue** and reduced energy levels

### How You Can Support

- Please help your child wear **something purple** on Friday 13<sup>th</sup> February.
- Take a moment to discuss with them why raising awareness matters to families affected by the condition.
- If you would like to learn more, the NHS and Sickle Cell Society have excellent parent-friendly resources.

### **Reminder: Green Tree Award Activities – We Need Your Help!**

You will have received a letter to inform you that our School Council is working towards the Woodland Trust's Silver Green Tree Award. To support this, children are taking part in two exciting activities:

- **Design a Tree Champion:** Your child will have brought home a design sheet to create their own woodland protector. Class shortlists will be judged by the School Council and Mrs Byrne, with a special nature-themed prize for the winner. If you haven't received this and would like one, please speak to the class teacher.
- **Share Your Woodland Words and Images:** We'd love to see your photos, drawings, nature art, poems, or writing inspired by woodland adventures. Physical entries can be given to class teachers, and digital submissions emailed to Mr Giles at **agiles@compassps.uk**.



Please send all entries by **Monday 13th April 2026**. Thank you for supporting our journey to Silver!

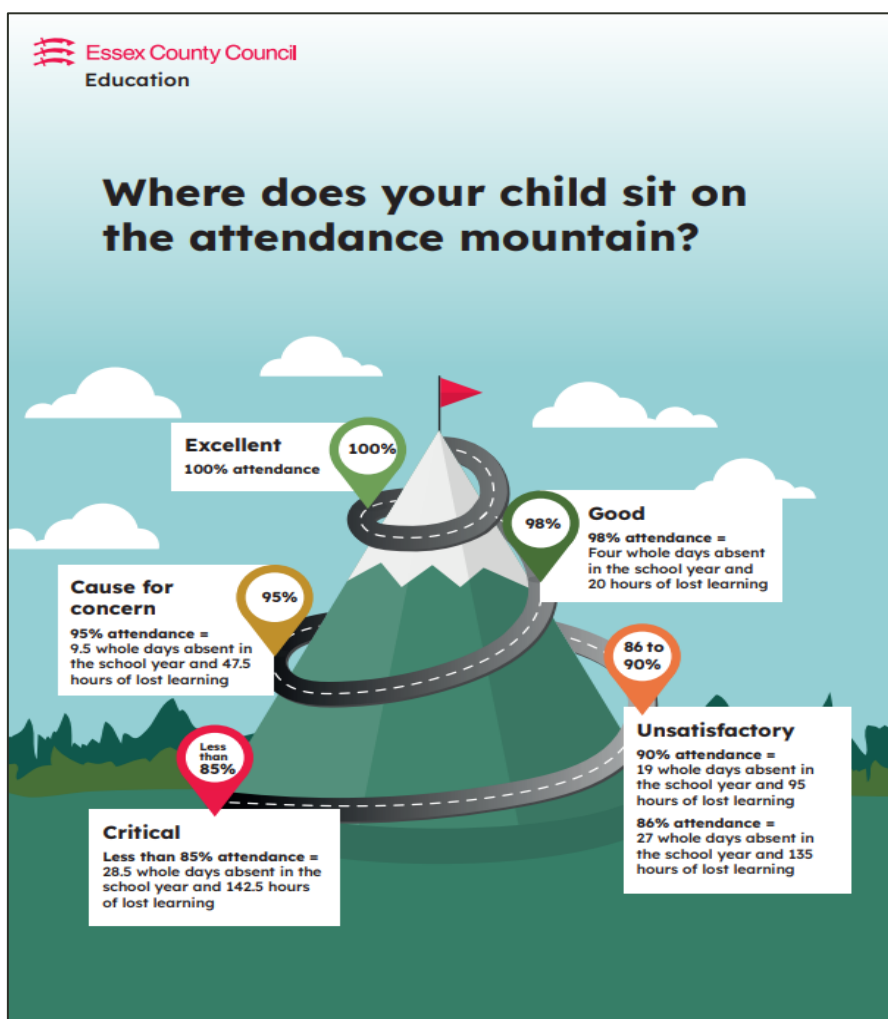
## Pancake day dessert **REMINDER!**

A reminder that on **Shrove Tuesday (10th February)** to celebrate Pancake Day, children having a school dinner will be able to enjoy a pancake, covered in either lemon and sugar or chocolate spread for dessert, instead of the usual raspberry jelly.



## The Attendance Update

Our attendance this week was 95%.



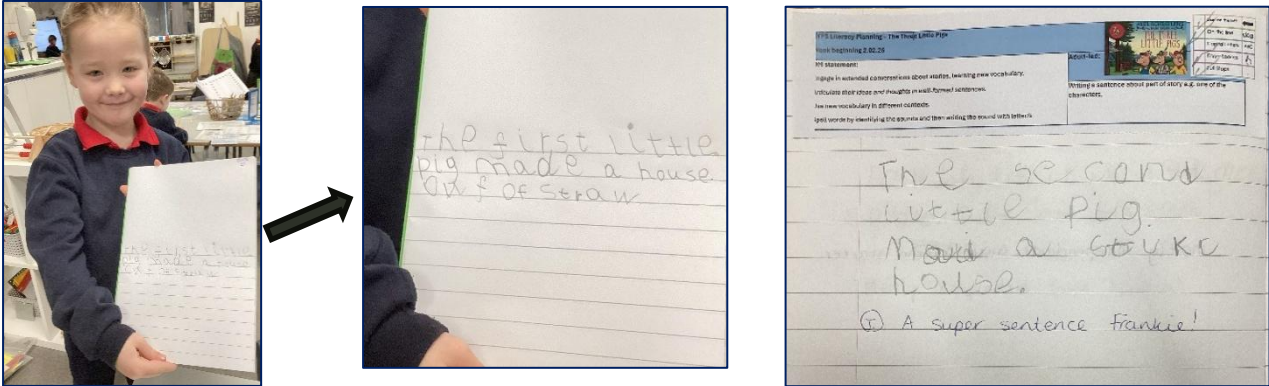
We know that children learn best when they are here, settled, and with their friends so if you are struggling with your child's attendance, please do come in and speak to us so we can see if there is any support we can offer.

If your child, is unable to attend school for any reason, **please make sure you let us know, by contacting the school on the morning of every day of their absence.**

Please be aware that for safeguarding purposes, we will now be carrying out home visits, if a child has been absent for three days.

## Learning

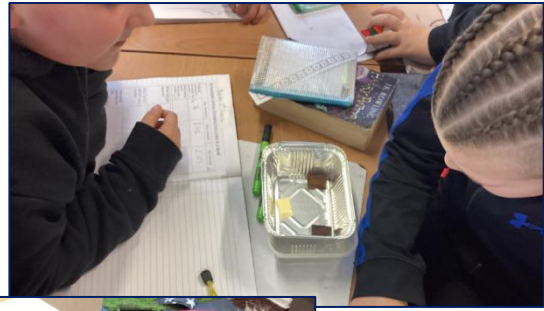
This half term, EYFS have been learning about traditional tales. They have been learning about the characters, the moral of the story and being able to retell the stories. This week **RB** have produced some beautiful writing about The Three Little Pigs, applying their phonic knowledge and fundamentals, such as capital letters and full stops.



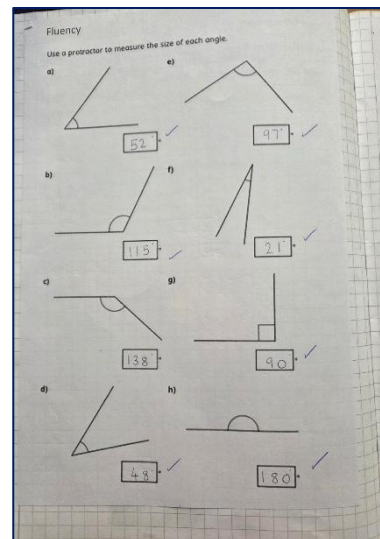
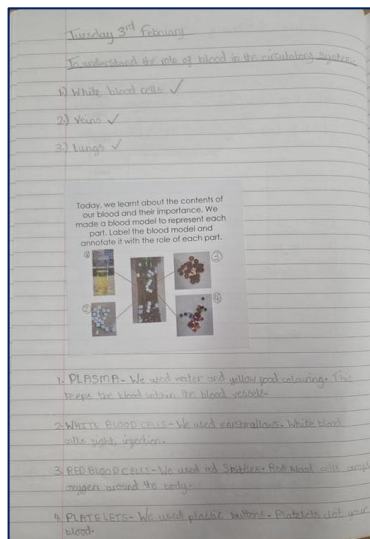
This week in PSHE, **2C** have been learning about different jobs, where money comes from and why we need it. The children then role played different jobs. Can you guess what we do?



In science, **4HH** have been investigating melting as part of their states of matter unit. They had to predict which type of chocolate would melt the quickest - milk, dark or white and then carry out the experiment to see if their prediction was correct. Many of them thought the white chocolate would melt first but it was the dark chocolate that first started melting.



**6L** have been learning about the circulatory system in science. They made a model of blood to help them remember the parts and functions of blood and they got to eat the leftover sweets! In maths they have been learning to use a protractor to measure angles accurately.



## Celebration certificates

Certificates awarded in our celebration assembly went to the following role models:

Year 1: Rosie & Dolly

Year 2: Kseveras & Oliver

Year 3: Charlie & Alice

Year 4: Evie & Archie

Year 5: Olly & Blake

Year 6: Phoebe & Esther

**Well done everyone!**

## More celebrations


We are delighted to share some wonderful news. This week, we received a letter from Bridget Phillipson, the Education Secretary, congratulating the school on the excellent outcomes achieved by our disadvantaged pupils, last year, placing our school among the very best nationally.

This recognition is a testament to the ambition, resilience, and determination shown by our pupils, as well as the dedication and expertise of the staff here.

Success on this scale does not happen in isolation. While we are incredibly proud of the children and grateful for the hard work of everyone in school, we also want to acknowledge the vital role played by you, our parents and carers. Your encouragement, engagement and partnership with us make a significant difference to the children's learning and wellbeing.

Achievements like these reflect the strength of our whole school community and we look forward to continuing this journey of success with you.

### A message from Bridget Phillipson




Dear Wendy,

**Congratulations** to you and your team on the excellent outcomes the disadvantaged pupils at Cann Hall Primary School achieved at the end of the 2024/25 academic year. Your school's performance places it among the very best nationally, and this is a significant achievement.

This success reflects the dedication of your staff and the hard work of your pupils. It shows what can be achieved when ambition and commitment come together. Thank you for everything you do to give children the best possible opportunities to succeed.

Your school's achievements demonstrate what is possible, and I hope you will continue to share your experience and best practice with others. Even the strongest schools can go further. We encourage you to lead the way as a system leader - sharing effective practice, championing networks, supporting collaboration, and helping raise standards across the sector.

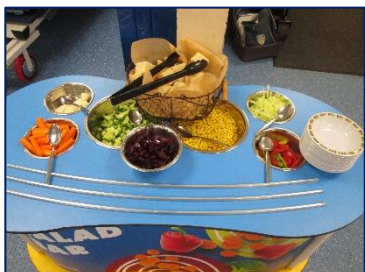
Please pass on my thanks and **congratulations** to your staff and pupils. I look forward to working with you as we strive together to raise standards for all.

*Your sincerely,*  


**Bridget Phillipson**  
Secretary of State for Education

## Parents lunch

We welcomed several parents into school this week to enjoy a school dinner alongside their child, helping to encourage those who do not yet have a school meal, to give it a go. Thank you to everyone who accepted the invitation and your feedback. We hope you enjoyed the experience and that it will help your child feel more confident about trying a school dinner.



Remember, every child in EYFS, Year 1 and Year 2 is entitled to a free school meal, every day no matter what the household income is.

## Good bye and thank you!

**Mrs Klein**, our office lead, will sadly be leaving us at the end of the half term to spend more time with her family. We are incredibly grateful for everything Mrs Klein has contributed to the school, during her time with us and wish her all the very best for the future. We will all miss her.

We are pleased to share that **Mrs Connolly** has been promoted to Office Lead, and we know she will continue to support our school community brilliantly in her new role.



Mrs Connolly's promotion has created an exciting opportunity to join our office team as an **Admin Assistant**. If you are interested in applying, please follow the link below for further details.

**Administration Assistant - Cann Hall Primary Sc...**

Closing date: 9:00am, Mon 16th Feb, 2026. View full details and apply online at MyNewTerm.

[mynewterm.com](https://mynewterm.com)

Office assistant role <https://mynewterm.com/jobs/138911/EDV-2026-CHPS-84308>

## **Children's mental health week**

Next week is children's mental health week, including safer internet day.

This year the theme is **'This is My Place'**, exploring belonging and how it plays a vital role in mental health. ([About Place2Be's Children's Mental Health Week](#)) Children will be taking part in various activities, across the week, including listening to a variety of songs, a special assembly and a reminder of how to keep safe online.



## **🚗 Reminder About Safe Parking Around School 🚗**

Please support us in keeping our surrounding roads safe for everyone. Recently, we have received a complaint regarding unsafe parking and driving behaviours during drop-off and pick-up times. This includes cars being double-parked, vehicles not leaving enough space for others to pass safely and some drivers travelling too quickly.

Please remember:

- Do not double-park or stop in a way that restricts access. Emergency vehicles must always be able to get through.
- Leave adequate space for other road users, including cyclists and pedestrians.
- Drive slowly and cautiously, especially near crossing points and where children are entering or leaving school.

## **Additional Information**

At the end of this letter, you will find information about half term family warm hub, advance teacher training, holiday camps at St. Claires, free webinars for parents and Colchester United Community Foundation holiday clubs.

## **Upcoming dates for your diary**

09.02.26: Children's Mental Health Week

10.02.26: Safer Internet Day

13.02.26: Sickle Cell Awareness Day

13.02.26: Break up for Half Term

Have a wonderful weekend, everyone!

Kindest regards

Wendy Byrne



# FEBRUARY HALF TERM FAMILY WARM HUB

St Clare's Primary School  
Cloes Lane, Clacton CO16 8AG  
**Monday 16th February 2026**  
10am-1pm

Free

- Breakfast/ lunch and refreshments
- **Local information & support for families**
- Winter Warmers
- **Smoke alarms**
- School Uniform bank
- **Term-time programmes / Activities**
- Library services
- **Children's services and activities**



All families welcome  
(children must be accompanied)





## CONSIDERING A CAREER IN PRIMARY TEACHING?



### Train to Teach with Advance Teacher Training

- We provide 1:1 mentor support to assist with your application and interview process.
- We have training opportunities available in Tendring, Colchester, Harwich & Braintree .
- With over 20 years of experience of delivering teacher training locally we offer knowledgeable trainers, excellent facilities and personalised support.

Contact us today and begin your journey into teacher training!

[enquiries@advanceteach.org.uk](mailto:enquiries@advanceteach.org.uk)



## CONSIDERING A CAREER IN TEACHING?



Come and find out more at our on-line information session on Thursday 12th March 12-2pm

- We offer 1:1 mentoring to assist with your application process.
- We deliver primary and secondary teacher training.
- We have training bases in Clacton-on-Sea and Colchester with schools in Tendring, Colchester, Braintree and surrounding areas.
- With over 20 years of experience delivering teacher training ,we offer knowledgeable trainers, excellent facilities and personalised support.

REGISTER NOW on [enquiries@advanceteach.org.uk](mailto:enquiries@advanceteach.org.uk)

Contact us today and start your journey into teacher training

[www.advanceteach.org.uk](http://www.advanceteach.org.uk)



Dear Parents, Guardians & Participants.

**We're thrilled to announce that our February & Easter Holiday Camps are now open for booking! Register today using the links below.**

We are also offering a discount on us for both holiday periods if you book early! We have lots of fun filled camps available to cater for all participants.

🎁 To claim your discount for February Half Term, simply use your unique promo code 'CUCFFEBRUARY26' at checkout when booking via Abler before 31st January 2026

🎁 To claim your discount for Easter Holiday, simply use your unique promo code 'CUCFEASTER26' at checkout when booking via Abler before 28th February 2026

What to expect from our holiday activities:

Activities within a safe and fun environment  
Book for as little as just £2.80 per hour  
High Quality Facilities  
Gifts & Prizes to be won  
Tailored sessions of different topics  
Small Sided Games & Tournaments Each Day  
Opportunities for CUFC 1st Team Player Appearances  
Opportunities for CUFC Mascot Eddie the Eagle Appearances

February Half Term 2026:

📍 ST CLARES PRIMARY SCHOOL, CLACTON ON SEA, CO16 8AG - Monday 16th & Tuesday 17th February 2026

Football Camp School Years 1-6 - 9.30am-3pm (early drop off option available) -

<https://www.abler.io/shop/colchesterunited/holidaycamps/product/Q2x1YINlcnZpY2U6NDk1OTg=?>

\*Individual days are also available to book\*

Easter Holidays 2026

📍 ST CLARES PRIMARY SCHOOL, CLACTON ON SEA, CO16 8AG - Tuesday 7th April & Wednesday 8th April 2026

Football Camp School Years 1-6 - 9.30am-3pm (early drop off option available)

<https://www.abler.io/shop/colchesterunited/holidaycamps/product/Q2x1YINlcnZpY2U6NDk2NDA=>

\*Individual days are also available to book\*

# FREE WEBINARS FOR PARENTS/CARERS

of primary aged children to support with  
mental health and wellbeing

Provided by your Mental Health Support Team  
@essexmhst\_and\_setcamhs

bit.ly/3MaR1wJ



## Coming up in February...

Understanding ADHD in Primary  
Aged Children  
11<sup>th</sup> February 6:30 pm

Supporting Your Child with  
Challenging Behaviour  
24<sup>th</sup> February 10 am



Striving to provide the best care by the best people

## COMMUNITY FOUNDATION

SCAN ME

# HAVE A DISCOUNT ON US!

USE CODES:  
CUCFEBRUARY26  
EXPIRES 31<sup>ST</sup> JAN  
CUCFEASTER26  
EXPIRES 31<sup>ST</sup> FEB

# HOLIDAY ACTIVITIES

**NEW  
HOLIDAY  
CLUB**  
8.30am - 5.30pm

FOR CHILDREN IN  
SCHOOL YEARS 1-6  
A FUN, ENRICHING,  
& VARIED  
CHILDCARE OFFER

SPORTS  
& GAMES  
ARTS &  
CRAFTS  
CHILL ZONE

**TO INSPIRE, ENRICH  
AND UNITE OUR COMMUNITIES**

www.cu-fc.com/cucf  
cucf@colchesterunited.net  
01206 755160  
@ColU\_CF /ColUFC  
#enrichourcommunities

Registered Charity Number: 1159381

## FEBRUARY HOLIDAYS

**SHRUB END COMMUNITY & SPORTS CENTRE, CO2 9BG**

DATES	TIME	SCHOOL YEARS	COURSE	FULL PRICE	PRICE 9/DAY
16 - 20 February 2026	9.30 - 16.30	1-6	OUTFIELDERS	£112.50	£25.00
16 - 20 February 2026	9.30 - 16.30	7-11	TRAIN LIKE A PRO	£112.50	£25.00
16 - 20 February 2026	9.30 - 16.30	1-8	GOALKEEPERS	£112.50	£25.00
16 - 20 February 2026	8.30 - 17.30	1-6	HOLIDAY CLUB	£135.00	£30.00

**ST CLARES PRIMARY SCHOOL, CLACTON, CO16 8AG**

16 - 17 February 2026	9.30 - 15.00	1-6	OUTFIELDERS	£40.00	£22.50
-----------------------	--------------	-----	-------------	--------	--------

**ALL SAINTS PRIMARY SCHOOL, MALDON, CM9 6HY**

17 - 18 February 2026	9.30 - 15.00	1-6	OUTFIELDERS	£40.00	£22.50
-----------------------	--------------	-----	-------------	--------	--------

**JOBERVE COMMUNITY STADIUM, CO4 5UP**

19 - 20 February 2026	9.30 - 16.30	1-6	OUTFIELDERS	£45.00	£25.00
-----------------------	--------------	-----	-------------	--------	--------

## EASTER HOLIDAYS

**SHRUB END COMMUNITY & SPORTS CENTRE, CO2 9BG**

WEEK 1					
30 March - 1 April 2026	9.30 - 16.30	1-6	OUTFIELDERS	£67.50	£25.00
30 March - 1 April 2026	9.30 - 16.30	7-11	TRAIN LIKE A PRO	£67.50	£25.00
30 March - 1 April 2026	9.30 - 16.30	1-8	GOALKEEPERS	£67.50	£25.00
30 March - 1 April 2026	8.30 - 17.30	1-6	HOLIDAY CLUB	£85.00	£30.00

WEEK 2					
7 - 10 April 2026	9.30 - 16.30	1-6	OUTFIELDERS	£90.00	£25.00
7 - 10 April 2026	9.30 - 16.30	7-11	TRAIN LIKE A PRO	£90.00	£25.00
7 - 10 April 2026	9.30 - 16.30	1-8	GOALKEEPERS	£90.00	£25.00
7 - 10 April 2026	8.30 - 17.30	1-6	HOLIDAY CLUB	£110.00	£30.00

**ST CLARES PRIMARY SCHOOL, CLACTON, CO16 8AG**

7 - 8 April 2026	9.30 - 15.00	1-6	OUTFIELDERS	£40.00	£22.50
------------------	--------------	-----	-------------	--------	--------

**ALL SAINTS PRIMARY SCHOOL, MALDON, CM9 6HY**

30 March - 1 April 2026	9.30 - 15.00	1-6	OUTFIELDERS	£60.00	£22.50
7 - 9 April 2026	9.30 - 15.00	1-6	OUTFIELDERS	£60.00	£22.50

**JOBERVE COMMUNITY STADIUM, CO4 5UP**

31 March - 1 April 2026	9.30 - 16.30	1-6	OUTFIELDERS	£90.00	£25.00
8 7 - 8 April 2026	9.30 - 16.30	1-6	OUTFIELDERS	£90.00	£25.00

**EARLY DROP OFF AVAILABLE.** Need an earlier start? Option at point of booking for early drop-off from 8.30am - 9.30am.

**TO INSPIRE, ENRICH  
AND UNITE OUR COMMUNITIES**

Registered Charity Number: 1159381

www.cu-fc.com/cucf  
cucf@colchesterunited.net  
01206 755160  
@ColU\_CF /ColUFC  
#enrichourcommunities

**Meet new friends.**

**Meet Col U players and/or mascot Eddie the Eagle.**

**Pathway Progression into our Development Centres**

**Opportunities to receive gifts and prizes.**

**Prices from as little as £2.80 per hour.**

**Age range 5-16 years old.**

THE  
**COMPASS**  
PARTNERSHIP OF SCHOOLS

A charitable trust  
company number: 10360957

Chief Executive Officer: John Camp OBE  
Registered address: C/o Alderwood Primary School, Rainham Close, Eltham, London SE9 2JB