

Cann Hall Primary School

Constable Avenue, Clacton, Essex CO16 8DA

Tel: 01255 420603

Email: chcontact@compassps.uk

Website: www.cannhall.compassps.uk

Executive Headteacher:

Ross Silcock

Head of School:

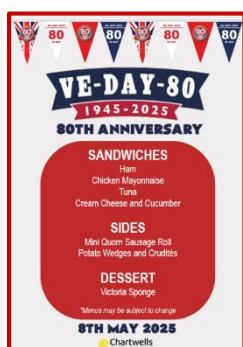
Wendy Byrne



Friday 9th 2025

Dear Parents and Carers

VE Day Celebrations



Special VE-Day lunch

As part of our VE Day celebrations, the catering team put on a special lunch for the children to enjoy. This went down well, with lots of positive comments.



In class

There has been a variety of learning and celebrations linked to VE day happening in classes across the school, this week.

EYFS made paper aeroplanes including some spitfires and then had a competition to see who's flew the furthest. They also made flags and medals.



Year 6 listened to a presentation on VE day and asked some fantastic questions. They then completed some VE day activities whilst listening to music of the time.



Census Day Menu



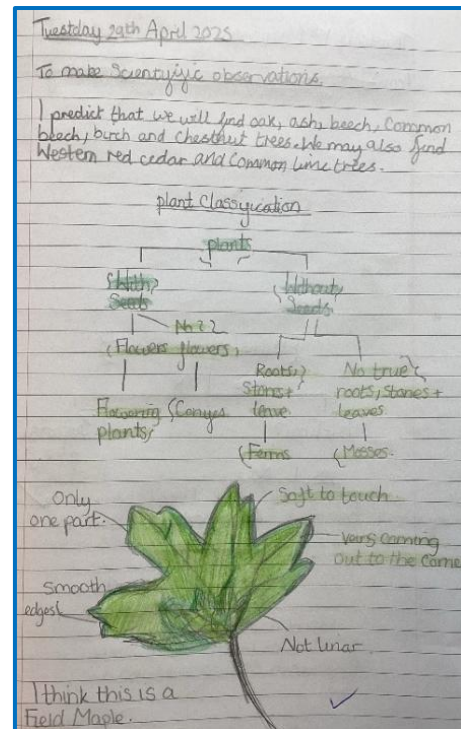
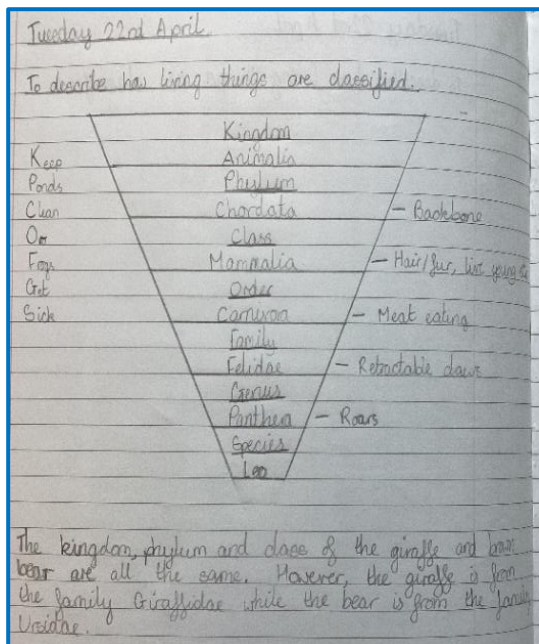
Don't forget that the much-loved **All-Day Breakfast** is back for one day only, on **Thursday 15th May**.

If we can get as many children in school on this day, choosing a hot meal, it will help with two things: ensuring we receive the best funding allocation as possible and, if we have enough children ordering the **All-Day Breakfast**, we might be able to convince Chartwells to put it back on the menu for good!



Learning

Year 6 have been classifying animals, plants and micro-organisms over the past couple of weeks. They have looked at the reason why Carl Linnaeus decided to classify living things. Scientists still use this system today as it is universally recognised. The children used various classification keys and particularly enjoyed collecting plant samples to classify and producing their own keys using noticeable features - they even had a go at classifying 6AB!!



Tuesday 29th April

To make scientific observations.

I predict that we will find oak, birch and chestnut trees. We may also find weasel and badger and common linn.

Plant Classification

```

    graph TD
      Plants[Plants] --> WithSeeds[with seeds]
      Plants --> WithoutSeeds[without seeds]
      WithSeeds --> Mosses[Mosses]
      WithSeeds --> Ferns[Ferns]
      WithSeeds --> Gymnosperms[Gymnosperms]
      WithSeeds --> Angiosperms[Angiosperms]
      WithoutSeeds --> Algae[Algae]
      WithoutSeeds --> Fungi[Fungi]
      WithoutSeeds --> Mould[Mould]
      WithoutSeeds --> Mushrooms[Mushrooms]
  
```

I think this is a birch leaf.

Conducting our own classification experiment

We went outside and classified ourselves using noticeable features. Our Kingdom (animalia), Phylum (Chordata), Class (Mammalia) were all the same. We then sorted by Order splitting into gender followed by family where we split according to light and dark hair. We then observed hair texture, straight or curly to determine Genus before eye colour (blue/green and brown) determining species groups. From beginning with one group, at the end we were divided into 11 separate groups.

Thursday 1st May

I can classify plants using observable features.

| | | | | | | | |
|--------|--------|-------|-----|-----|-------|---------|------|
| Komodo | Spider | Human | Ant | Fox | Snail | Seagull | Frog |
|--------|--------|-------|-----|-----|-------|---------|------|

Use the key below to sort the animals. Write the name of each animal and the correct end box.

```

    graph TD
      Kingdom[Animal Kingdom] --> Vertebrates[Vertebrates]
      Kingdom --> Invertebrates[Invertebrates]
      Vertebrates --> Amphibians[Amphibians]
      Vertebrates --> Mammals[Mammals]
      Vertebrates --> Birds[Birds]
      Invertebrates --> Arthropods[Arthropods]
      Invertebrates --> Molluscs[Molluscs]
      Arthropods --> Insects[Insects]
      Arthropods --> Arachnids[Arachnids]
      Insects --> Bees[Bees]
      Insects --> Ants[Ants]
      Insects --> Spiders[Spiders]
      Molluscs --> Snails[Snails]
  
```

There is a box with two arrows. Using the key below, create another category which can be used to separate them. Start by writing in the category they are both in:

Is it large? (ish)

Yes No

Is it the same colour?

Yes No

Is it compound?

Yes No

Japanese Honeycreeper ✓ Parakeet ✓ Hawkmoth ✓ Field Mouse ✓

Tuesday 6th May

To explain how micro-organisms are classified.

```

    graph TD
      Micro[Micro-organisms] --> Bacteria[Bacteria]
      Micro --> Fungi[Fungi]
      Micro --> Algae[Algae]
      Micro --> Viruses[Viruses]
      Bacteria --> Spirilla[Spirilla]
      Bacteria --> Cocci[Cocci]
      Bacteria --> Bacilli[Bacilli]
      Fungi --> Mould[Mould]
      Fungi --> Yeast[Yeast]
      Fungi --> Spores[Spores]
      Algae --> Diatoms[Diagrams]
      Algae --> Green[Green]
      Algae --> Red[Red]
      Algae --> Blue[Blue]
      Viruses --> Corona[Corona]
      Viruses --> Ebola[Ebola]
      Viruses --> HIV[HIV]
      Viruses --> Aids[Aids]
      Viruses --> Covid[Covid-19]
  
```

- Bacteria**
Can be rod-shaped, spiral or spherical. Some bacteria can be useful, such as the one found in our stomachs. Some can make us ill.
- Viruses**
Viruses are parasites and can only live in cells & other living things. They can cause infectious diseases.
- Fungi**
Can be a single cell, like yeast, or multi-cellular like mould or breadstamps.
- Algae**
Can be many different sizes and can sometimes be used in toothpaste.



On Wednesday, **Year 2** went on a magical adventure to Wyvernwood. They were greeted by the Captain and Princess Arabella, who took them through the magical portal. To begin their adventure, the children were told a story of the Dragon's tail and then got to meet Lord Gurt, King of the Goblins. The children also had a chance to explore the grounds and finished the day by completing a Kingdom Quest, to gain their treasure from the captain. There are more photos on our Facebook page.

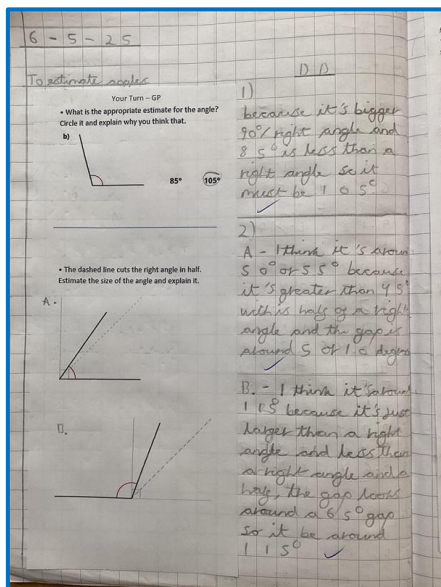


to



Thank you to everyone who gave up their time support with this trip.

Last half-term **Year 3** studied Pamela Sunday, a hand-sculptor inspired by nature and natural forms. To finish the unit, they created their very own clay tiles inspired by different flowers. It took a lot of perseverance and patience with the clay, but we are very proud of the finished pieces!

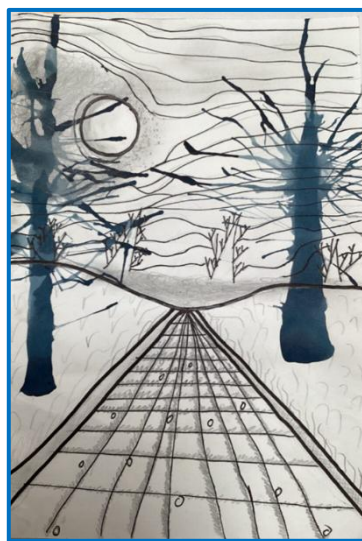


This week in **Year 5**, Imogen has shown an excellent understanding of how to reason in mathematics. In the picture, she is explaining clearly why an unknown angle is the type it is by reasoning about its relative size compared to others. Great 'diving deeper', Imogen!

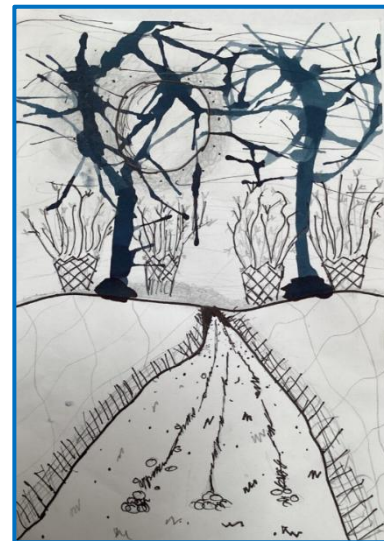
Y5 have also been exploring the artwork of Charles Keeping, who created the illustrations for the Highway Man. Here are some amazing examples!



Lillie



Sonnie



Woody

Fundraising for charity



Kira in Year 2 is doing an amazing and selfless charity event, having her long locks cut and donated to the Little Princess Trust this weekend. She has also been raising money through sponsorship for the charity and if you would like to support her and the charity or to find out more, please click on the link below:



https://www.justgiving.com/page/kirascut?utm_medium=FR&utm_source=CL&utm_campaign=015

The Little Princess Trust provides real hair wigs, free of charge, to children and young people who have lost their own hair through cancer treatment or to other conditions such as Alopecia. The charity is also one of the largest funders of childhood cancer research in the UK.

What a total inspiration you are Kira – we are all so proud of you!



PE kit reminder

Please can we remind you of our expectations for uniform on PE days.



PE kits to be worn to school on PE days with a school jumper or cardigan:

1. Plimsolls or light weight trainers (preferably with elastic fronts rather than laces for infant children)
2. Plain red T-shirt or logo T-shirts, which are available at the office (Not football shirts)
3. Plain black shorts
4. Grey/black/Navy tracksuit for colder weather

Children are not permitted (in line with Health & Safety guidelines) to wear earrings for PE and these must be removed by the child. School staff are not permitted to either cover or remove earrings.

For further information regarding our uniform policies, please refer to our website on the following link: [Cann Hall Primary School - Uniform](#)



Please can you also ensure that all items of uniform are named, as we are accumulating lots of lost items of clothing!

TENDRING SHOW – SATURDAY 12TH JULY – FREE CHILD E-TICKET

Remember, as a thank you for entering the Front Cover Competition, the Tendring Show are offering free child e-tickets for every child in our school. To claim your ticket(s), simply redeem this promotion code at the checkout of the online ticket page on their website <https://tendringshow.ticketsrv.co.uk/tickets/>



PROMOTION CODE: CANNH

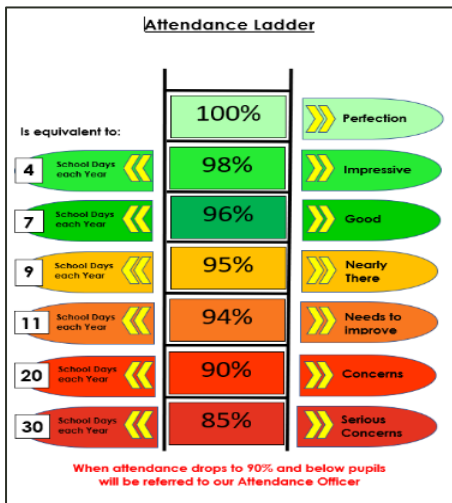
Would you or someone you know like to join the Cann Hall team?

We currently have a vacancy for an HLTA (Higher level teaching assistant)

The role would involve teaching cover for whole classes during the short-term absence of teachers and during PPA absence as well as offering general support across the school.

For more information and an application form, please click on/or share this link: [Link to HLTA role.docx](#)

Attendance Update



Our overall attendance remained at **94.6%** this week.

As always, if you are struggling with anything regarding your child's attendance, please do not hesitate to ask to speak to somebody. We are here to help and want your child to get the most out of their education, whilst here with us and being in school every day, when they are well enough to do so, will help with this.

Celebration Assembly!



Congratulations to all the children who received certificates this week, to acknowledge effort and achievement.

EYFS: Finley and Nala
Year 1: Noah and Laila
Year 2: Sofiana and Amelia
Year 3: Riley and Tommy
Year 4: Elle and Darcy
Year 5: Lillie and Stanley
Year 6: Frankie and Lucas

Parent Survey

A huge thank you to those of you who have already completed our parent survey.

Your feedback helps us to understand what we are doing well and where we can improve. It plays a vital role in shaping the future of our school community.



For those of you who have not yet completed this survey, can we ask you take a few moments to complete it, using the link below, Your voice will truly make a difference. Thank you!

<https://forms.office.com/e/YPFgjr7e7>

KS2 SATs Week



Just a quick reminder that our Year 6 pupils will be sitting their SATs next week. We are all incredibly proud of them – their hard work, focus and resilience have truly shone through. With the amazing support they have had this year from all their teachers and from you all at home, they are more than ready. We know they are going to do brilliantly - you've got this Year 6!

Upcoming dates for your diary

12.05.25: KS2 SATs week
12.05.25: One plan meeting week
13.05.25 to 27.06.25: CSSE 11+ exam for 2026 entry
19.05.25: Walk to school week
21.05.25: National Numeracy Day
23.05.25: Break up for half term
02.06.25: Children return to school
02.06.35 & 09.06.25: Year 4 multiplication check fortnight
09.06.25: PTA Father's Day Pop Up Shop
09.06.25: Year 1 and Year 2 phonics screening check week
16.06.25: KS1 SATs week
17.06.25: Class photos
25.06.25: Whole School Transition Day
27.06.025: PTA Summer Fayre (*children can be collected from 2pm to visit the Fayre*)
02.07.25: EYFS Sports Day
03.07.25: KS1 and KS2 Sports Day
06.07.25-09.07.25: Year 6 Residential Trip
09.07.25: End of Year Reports sent home
10.07.25: Final Parents' Evening/Meet Your New Teacher Evening (3.30-4.30pm)
14.07.25 & 15.07.25: Year 6 Production **TBC**
17.07.25: Year 6 Leavers' Party 4-6pm
18.07.25: Year 6 Leavers' Assembly (10am)
18.07.25: Last day of term

From all the team here, we hope you have a lovely weekend.

Kindest regards

A handwritten signature in black ink that reads 'W. Byrne'.

Wendy Byrne



Are you interested in Primary Teaching?

We have teacher training opportunities available for people interested in becoming a Primary Teacher

Come and find out more at our on-line Primary Teaching Information Events



Find out more

Register your interest now!

enquiries@advanceteach.org.uk



Why Us?

We have placement schools in Tendring, Colchester, Braintree and surrounding areas. With over 20 years of experience delivering teacher training, we offer knowledgeable trainers, excellent facilities and personalised support.

Monday - 19th May @1pm

Monday - 9th June @1pm

We look forward to seeing you!

Other community events

PARENTS 1ST FACEBOOK GROUP

Tendring Facebook Group for new and expectant parents



Ask questions to other parents



Meet local parents



Find and share information

Parents 1st Clacton, Jaywick and Tendring is a Facebook group just for expectant and new parents with children under two years old!

You can find out more about Parents 1st Parent meet ups, events, classes and our award winning one to one support for parents, by parents.

We also share useful evidence based information to support you in your pregnancy and parenting journey.

We believe that parents are best placed to be there for each other. So, we're inviting you all to join this group and get involved!

We welcome parents from across the Tendring district, including Clacton, Walton, Harwich, Manningtree & surrounding areas.

Scan the QR to join or search for 'Parents 1st Clacton, Jaywick and Tendring' on Facebook!

Join the group!



Call us on 01268 525 758
Email: info@parents1st.org.uk
Visit: essex.parents1st.org.uk
@parents1stessex



Parents1st UK

The Parents 1st Essex programme was awarded the King's Award for voluntary service in 2023.



Clacton Police Station Open Day

Beatrice Road, Clacton on Sea
Saturday 17 May 2025 - 11am till 2pm

