

# Cann Hall Primary School

Constable Avenue, Clacton, Essex CO16 8DA

Tel: 01255 420603

Email: [chcontact@compassps.uk](mailto:chcontact@compassps.uk)

Website: [www.cannhall.compassps.uk](http://www.cannhall.compassps.uk)

**Head Teacher:**

Sarah Crookes

**Deputy Head Teacher:**

Wendy Byrne



Friday 12th January 2024

Dear Parents and Carers,



Happy New Year to you and your family. It was lovely to welcome you all back on Thursday, after the Christmas and New Year break.

The children were very excited to catch up with their teachers and friends and tell them all about Christmas. We were all so very impressed, as always, with the way they settled so quickly back into their learning.



As you can see, Year 2 were already tasting different breads, last Friday afternoon and ranking them in terms of how healthy and tasty they were! All this is in preparation for when they start making their own bread later in the half term.



The class teachers have also been busy, this week, putting up high quality displays, to celebrate the children's work, from last half term. Until your next visit into school, here's a quick preview of some of the displays as they go up.



THE  
**COMPASS**  
PARTNERSHIP OF SCHOOLS

A charitable trust  
company number: 10360957

Chief Executive Officer: John Camp OBE  
Registered address: C/o Alderwood Primary School, Rainham Close, Eltham, London SE9 2JB



Year 5



EYFS



Year 3



Year 2

As we start a new term, here is another reminder of what your child will be learning over the coming weeks:

Year	Class Texts	Main Topic
EYFS	Traditional Tales	Materials and Healthy Eating
Year 1	Lighthouse Keeper's Lunch The Snail and the Whale	History – Grace Darling (RNLI inspiration)
Year 2	Azzi in Between	History –Clacton in the Past (Significant Places in the Locality)
Year 3	The Accidental Prime minister	Geography – The River Colne. How does the landscape change through the course of the river? Physical and Human Features of the River Colne.
Year 4	The Rhythm of the Rain	Geography – Geographical Location, Time Zones. Similarities and Differences between UK and Antarctica.
Year 5	Journey to the River Sea	Geography – Physical Diversity of a region in South America. The Amazon Rainforest.
Year 6	Holes	Geography – Key physical features of a region (West Coast) North America. Natural Disasters – hurricanes, flooding, volcanoes, earthquakes.

Don't forget, if you would like to know what other topics your children will be learning, in all of the other subjects being taught next half term, or indeed across the whole year and future years, you can find our curriculum overview here, [Cann Hall Primary School - Curriculum \(compassps.uk\)](https://www.compassps.uk/).

## **Blake Drive Parking Complaints**

This week we had several complaints from the residents on Blake Drive concerning parents and carers, who are parking illegally and dangerously, when dropping off and collecting children from our school. They shared with us that some parents/carers are not only parking across their driveways but they have even had incidences where people are parking in their gardens, actually on their driveways.

The residents understand that living by a school will mean that there are higher levels of traffic and parked cars at certain times of the day, but they have got to the point where, as a collective, they are now contacting the local council and Essex Highways to put in a formal complaint.

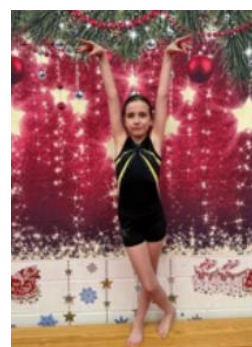
We do really appreciate that you are helping us keep everyone safer at drop off and collection times, by keeping Constable Avenue, outside the school, clear but please try to be considerate of our neighbours too, when parking in nearby roads. Thank you.

## **More Gymnastic Success**

We have another gymnastic star in the making.

Just before Christmas Angel-Eve entered a Gymnastic Competition and came 1<sup>st</sup> on the Vault and 3<sup>rd</sup> on the parallel bars.

What a fantastic achievement Angel-Eve. We are all very proud of your achievements and are sure that there will be more to come!



## **E-Scooter Safety**



The Safer Essex Road Partnership have written to us because e-scooters are becoming more of an issue and a danger for our young people; with instances of children in primary school even owning e-scooters.

They have asked us to share a flyer (found at the bottom of this letter) they have produced about e-scooters to alert you of the facts and legalities around e-scooters.

The key points:

1. Privately owned e-scooters are illegal to ride on the highway. Ones you can buy from shops like Halfords can only be used on privately owned land, with the landowner's permission.
2. Trial hire scooters can only be ridden by people 18 years plus, with a driver's licence. These scooters can only be used by the person who create the Tier account.
3. Students storing e-scooters on school grounds can cause a fire risk with lithium battery fires.
4. Riding an e-scooter puts the rider at much higher risk on the roads, any collision may be more serious.

Read more about e-scooters by clicking here [Warning over illegal use of E-scooters ahead of Christmas | Essex Police](#)



## Attendance Update

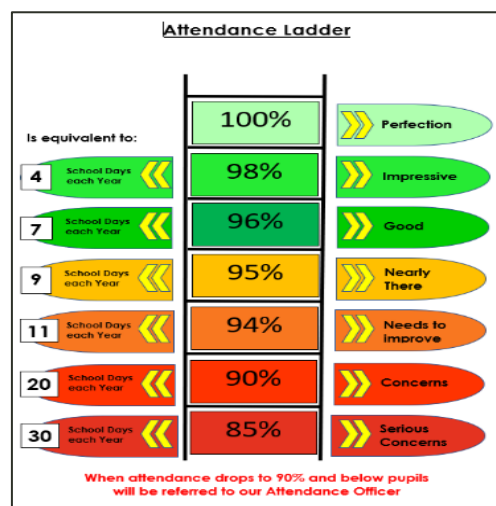
Our overall attendance this week was **93.7%**.

As mentioned before, lateness will also affect your child's attendance record so please ensure that they are in school with everything they need for the day, before the gates close at 8.40am, each day. This will also help the school office complete their crucial daily attendance checks, in good time.

There is wide agreement among health professionals and educational professionals that school attendance is vital to the life chances of children and young people. Being in school improves health, wellbeing and socialisation throughout the life course. The greatest benefits come from children and young people attending school regularly.

It is usually appropriate for parents and carers to send their children to school with mild respiratory illnesses. This would include general cold symptoms: a minor cough, runny nose or sore throat. However, children should not be sent to school if they have a temperature of 38°C or above. The [NHS 'Is my child too ill for school?' guidance](#) has further information.

In addition to respiratory illnesses, we are aware that more children may be absent from school due to symptoms of anxiety than before the pandemic. Worry and mild or moderate anxiety, whilst sometimes difficult emotions, can be a normal part of growing up for many children and young people. Being in school can often help alleviate the underlying issues. A prolonged period of absence is likely to heighten a child's anxiety about attending in the future, rather than reduce it. DfE has published useful [guidance on mental health issues affecting a pupil's attendance](#) and those who are experiencing persistent symptoms can be encouraged to access additional support.



## NSPCC Number Day



We are going to support the NSPCC again this year, by taking part in their NSPCC Number Day on **Friday 2<sup>nd</sup> February**. We are again asking the children to take up the challenge and 'Dress up for Digits'.

For a minimum donation of £1, the children can come to school wearing an outfit with a number on it. This can be a favourite sports top or cap. Or why not get more creative and design a unique t-shirt, hat or even become a human-sized calculator, dice, playing card or even a dartboard!

## **Wraparound Care Parent Survey**

Essex County Council is committed to supporting the national wraparound program as part of the childcare reforms announced in the 2023 spring budget. It is the Government's ambition that by 2026, all parents and carers of primary school-aged children who need it, will be able to access termtime childcare, in their local area, from 8am-6pm to enable parents to access employment.

As a parent or carer of a child who attends primary school they want to know your requirements for wraparound care and are asking you to complete this short survey – <https://forms.office.com/Pages/ResponsePage.aspx?id=TzK0qFwVFUKg8X7YzJqZLwjRBQ0e02BCvDZWV2-UaK9UQVhXVEtPOE9RT0hYWTJaSVdJRUIJOWDdHNC4u>

Your answers will help them to understand where Essex County Council should target support and/or funding. Participation is completely voluntary, and they would really appreciate your time in doing this.

The survey will remain open until 28th of January 2024. If you need support with completing this form, or if you have any questions please email- [wraparound.childcare@essex.gov.uk](mailto:wraparound.childcare@essex.gov.uk)

## **Contacting the School Office**



Please can we remind you that if you need to contact the main school office between the peak periods of **8.30am to 9am** that you please email the school instead, using [chcontact@compassps.uk](mailto:chcontact@compassps.uk) and then someone will be get back to you as soon as possible. At all other times, please call 01255 420603 and press option 4 to speak to someone. Thank you.

## **The Big Ambition – Last Push**


'The Big Ambition' Survey will be **closing on Friday 19<sup>th</sup> January**. So far over over 300,000 children, young people, parents and carers have participated, making it one of the largest surveys of its kind!



This is the final push to hear from even more children before the survey closes, it is so important that every child in England has an opportunity to tell policy makers what they want and need ahead of the General Election.

By completing this survey, pupils and parents or carers, can make sure that the children and young people of Essex are fairly represented in the results.

Children and parents or carers can complete the survey here: [www.childrenscommissioner.gov.uk/thebigambition](http://www.childrenscommissioner.gov.uk/thebigambition)



**NHS**  
Essex Partnership University  
NHS Foundation Trust

# VACCINATION CLINICS

**Has your child missed their school vaccinations?**

**We are running catch up clinics in your area.**

Where: Green Lodge, Old Road, CO15 3AY  
When: Saturday 13/01/24  
Time: 10am to 3pm

Where: Stanway Youth Centre, CO3 0PZ  
When: Saturday 27/01/24  
Time: 10am to 3pm

**Year 10 & 11 pupils only**

- HPV (Cancer vaccine)
- Meningitis ACWY
- Diphtheria, Tetanus and Polio Booster

**Reception to Year 11**

- Flu Vaccine (Nasal & Injection available)

**If your child is eligible, don't delay.**  
 Book your nearest clinic NOW or for more information on missed vaccinations please call 0300 790 0597.

#DOYOURBIT EP0996c

## Vaccination Catch Up Clinics

This poster gives you information regarding upcoming clinic dates for vaccination catch ups.

## Are you interested in becoming a teacher? Do you have a degree?



If so, why not go along to one of the following drop-in coffee mornings to find out more.

They are being held between **10am-12noon** on **Saturday 20th January** @ Tendring Education Centre, Jaywick Lane, Clacton-on-Sea, CO16 8BE and **Saturday 27th January** @ The Stanway School, Winstree Road, Colchester, CO3 0QA.

### **Upcoming dates for your diary**

15.1.2024: Primary School Applications Closing Date

18.1.2024: Census Day

25.1.2024: Year 6 SATs Meeting for Parents and Carers

2.2.2024: NSPCC Number Day and Dress Up for Digits, and TT Rockstars Tournament

5.2.2024-9.2.2024: Children's Mental Health Week

6.2.2024: Safer Internet Day

12.2.2024: PTA Discos- Rec, Y1 & 2 15.10-16.10; Y3 & 4 16.20-17.20; Y5 & 6 17.30-18.30

**17.2.2024-25.2.2024: Half Term**

**26.2.2024: Children Return to School**

1.3.2024: Secondary School Offer Day

4.3.2024: PTA Mother's Day Pop-Up Shop

7.3.2024: World Book Day

13.3.2024: Learning Conferences 4.00-7.00pm

14.3.2024: Learning Conferences 3.40-6.00pm

15.3.2024: Comic Relief

27.3.2024: Easter Service Assembly at School

**29.3.2024-14.4.2024: Easter Holidays**

**15.4.2024: Children Return to School**

Wishing you all a lovely weekend.

Kindest regards



Sarah Crookes & Wendy Byrne

## → Know your e-facts

In order to obtain an MOT and insurance to be used legally in public, an e-scooter must be approved by the Vehicle Certification Agency for its construction and use for transport on the public highway. No such approval exists for privately owned e-scooters.

If you are using a private e-scooter on public roads, or footways, the police can seize it and you could be liable for prosecution for traffic offences, and even receive points on your licence.

Risks include:

- Lack of maintenance affecting braking and tyre performance.
- Charging of devices in the home introduces fire risk, especially if batteries have become damaged or wet.
- Scooters can easily over balance on bumps or holes due to their small wheels.
- Handling can be unpredictable, especially when reacting to hazards.
- There can be a temptation to ride while intoxicated or distracted.

## → Did you know?

### It is illegal to ride a private e-scooter on a public road or pavement

What is an e-scooter?

Electrically powered scooters are classed as a mechanically propelled vehicle, which means the same rules apply to e-scooters as other motor vehicles. These rules also apply to other personal electric transporters, with the exception of mobility scooters.

Electric scooters are treated the same as any other motorised vehicle, this means they must have MOT, Vehicle Excise Duty ("tax") and insurance.



## → How to ride legally

A number of rental schemes have been set up in towns and cities in the UK, including Basildon, Chelmsford, Braintree and Colchester in Essex. These schemes allow people to use rented e-scooters legally.

To use these schemes, you must:

- Be aged 18 or over.
- Hold a UK driving licence.
- Only ride on roads and cycle-paths within the hire scheme areas, pavement riding is not permitted.
- Not carry passengers or allow others to use a scooter you have hired.

Wearing a helmet is highly recommended, and riders have the same responsibility to obey traffic laws as anyone driving a car.



E-scooters are motor vehicles, so must not be used by children.

**VISION  
ZERO**  
NO ROAD DEATHS

[www.saferessexroads.org](http://www.saferessexroads.org)

 **SAFERESSEX**  
roads partnership

THE  
**COMPASS**  
PARTNERSHIP OF SCHOOLS

A charitable trust  
company number: 10360957

Chief Executive Officer: John Camp OBE  
Registered address: C/o Alderwood Primary School, Rainham Close, Eltham, London SE9 2JB